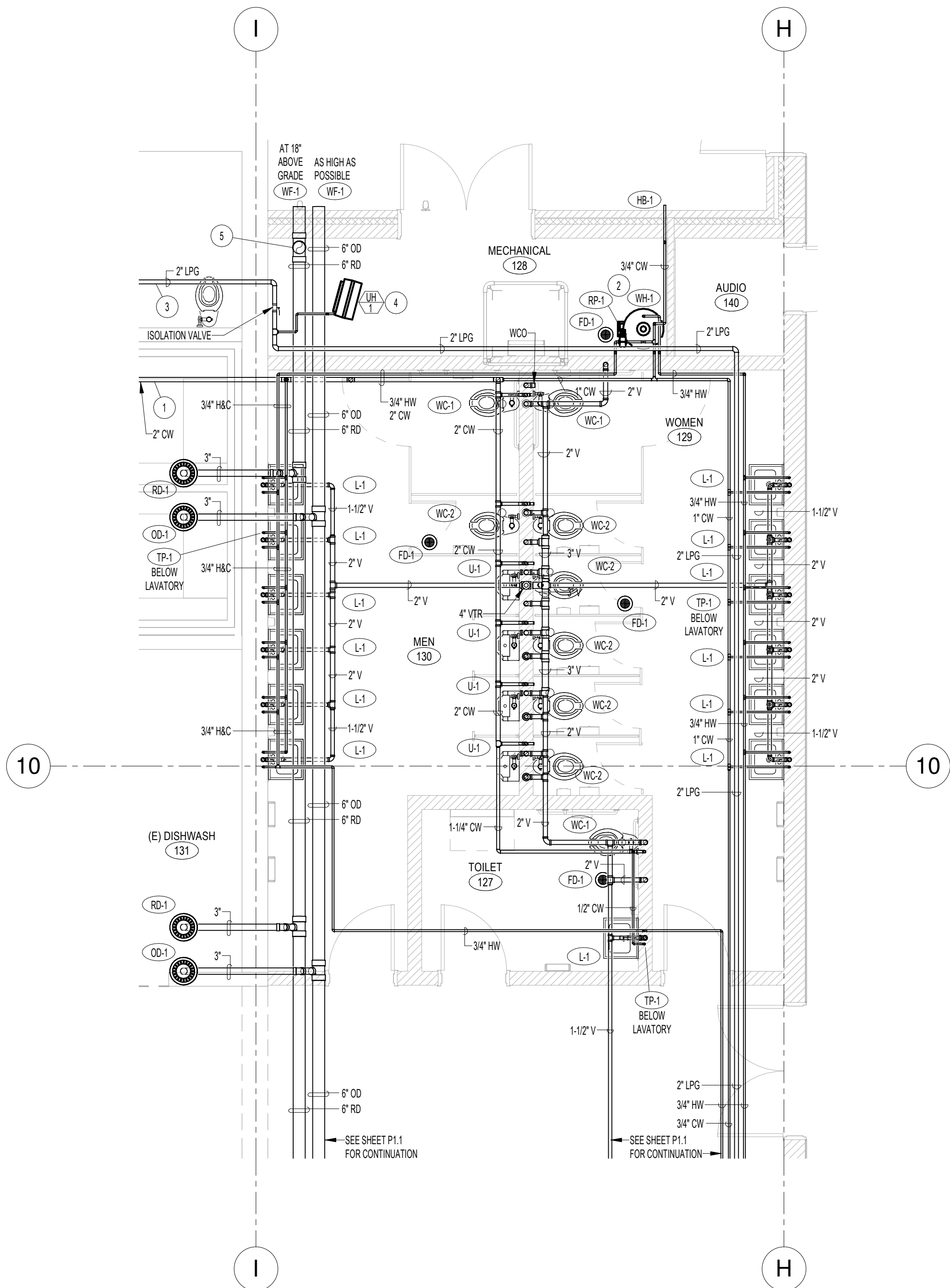


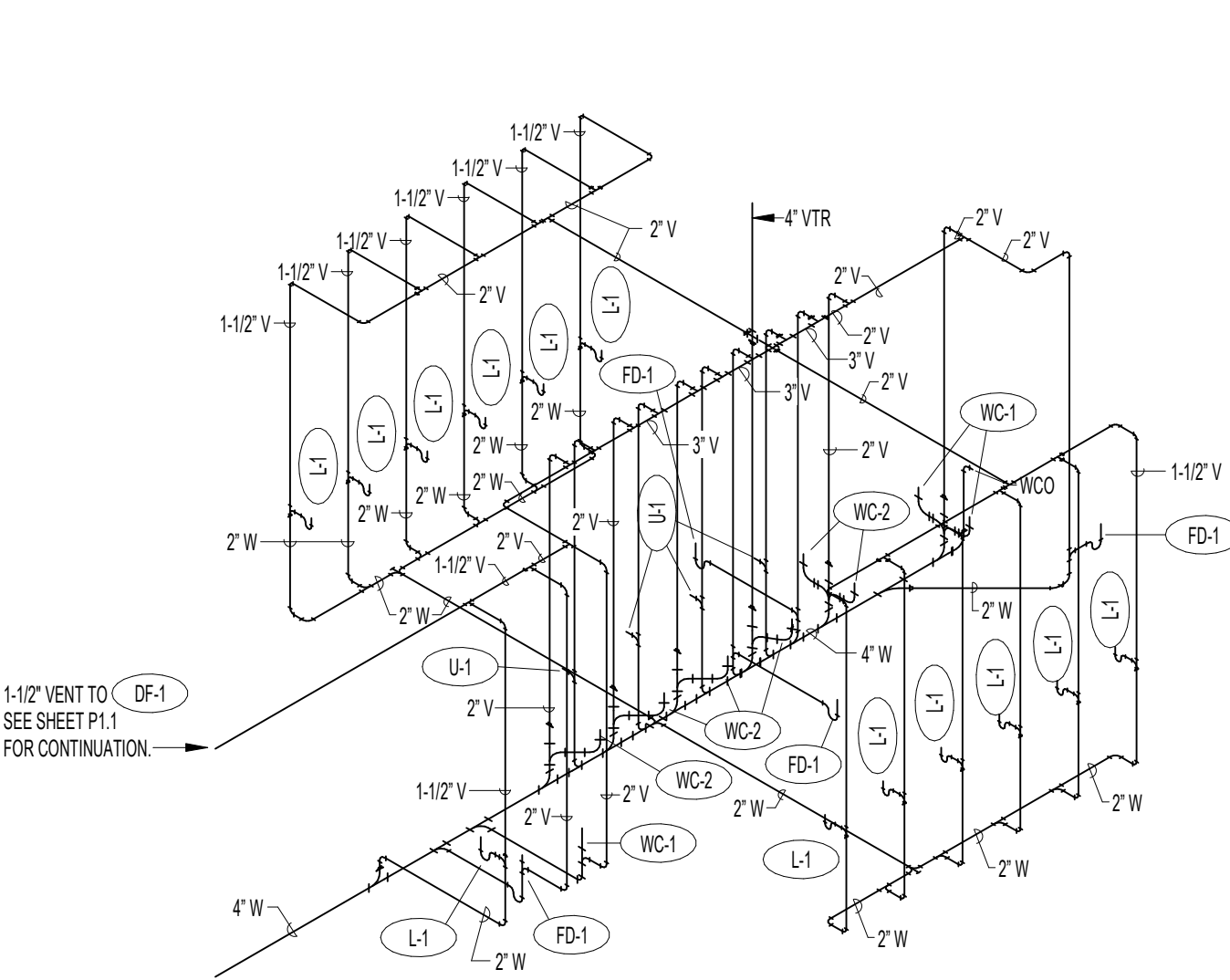
LARGE SCALE TOILET ROOM FOUNDATION PLAN

SCALE: 1/4" = 1'-0"



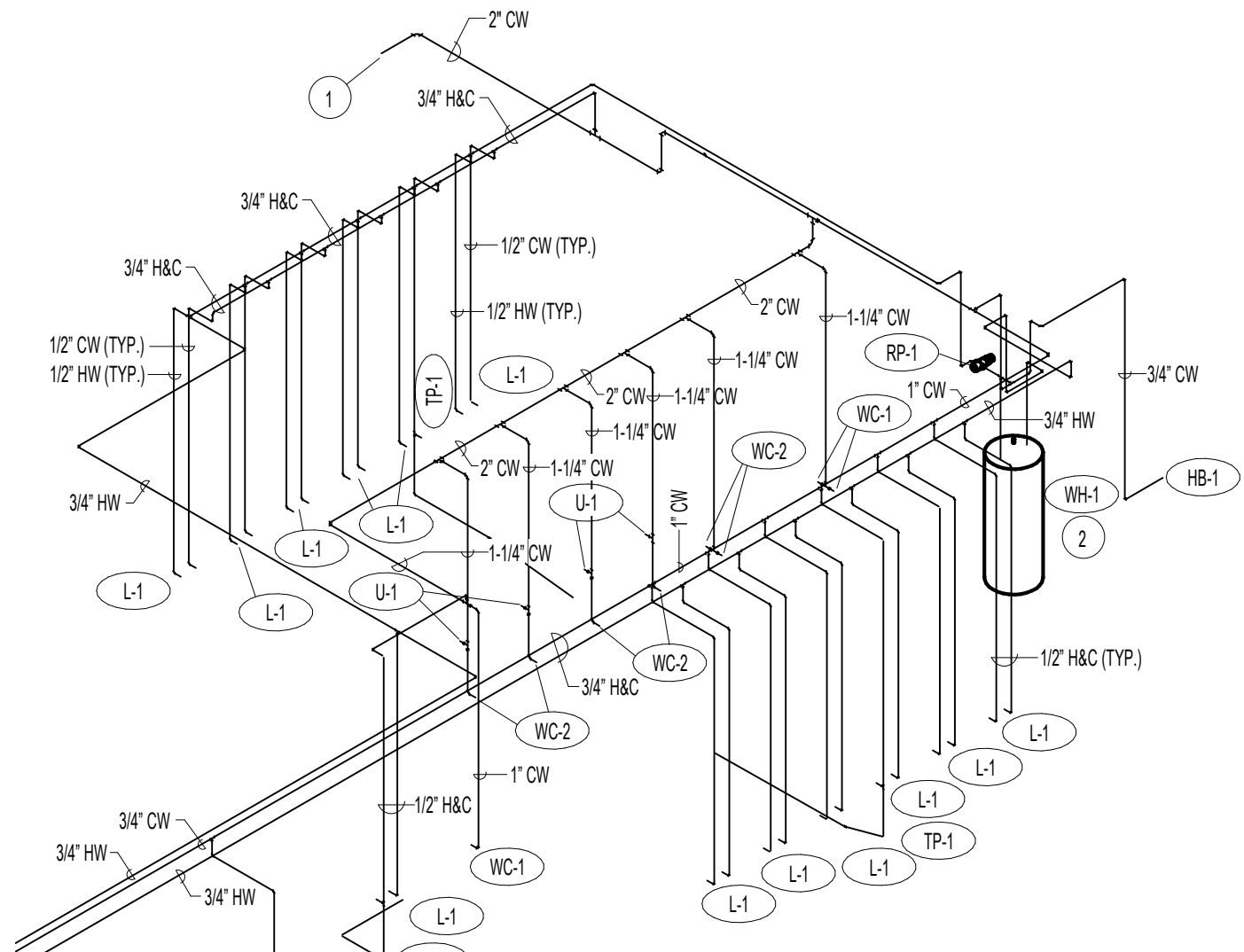
LARGE SCALE TOILET ROOM FLOOR PLAN

SCALE: 1/4" = 1'-0"



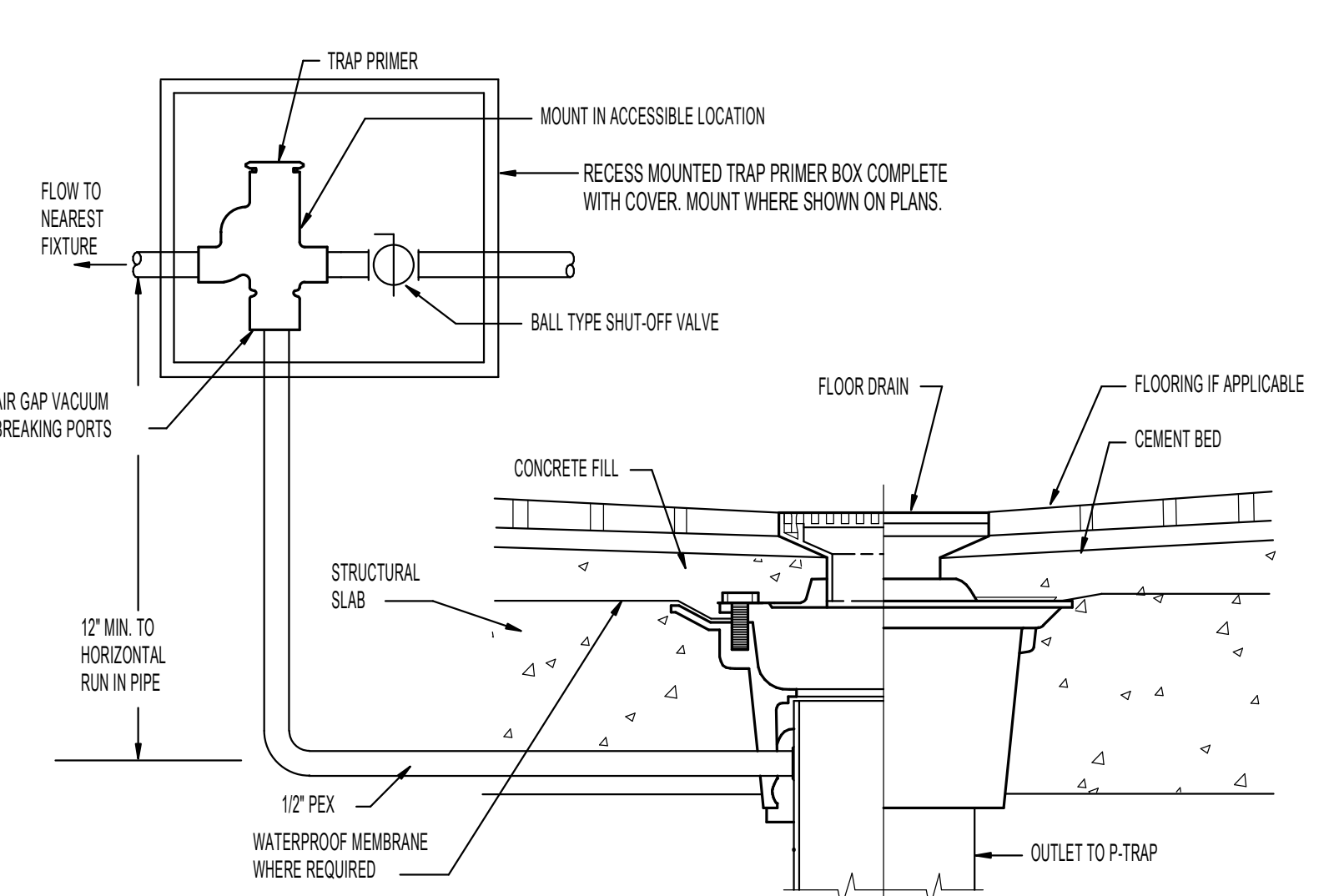
WASTE AND VENT RISER DIAGRAM

NO SCALE.



WATER PIPING ISOMETRIC

NO SCALE.



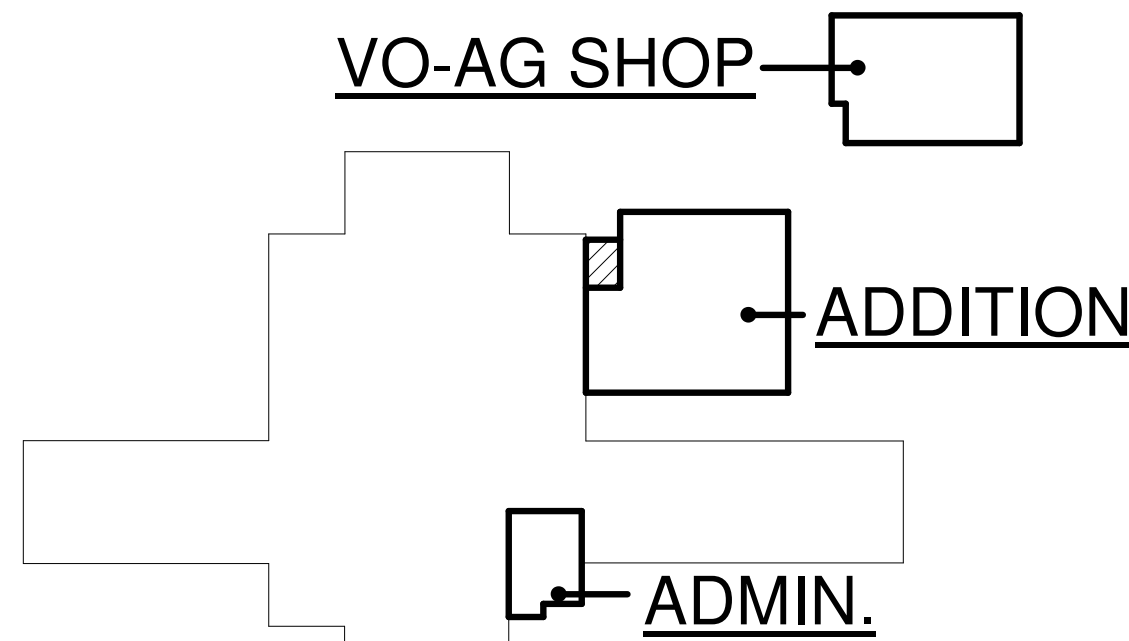
TRAP PRIMER DETAIL

NO SCALE.

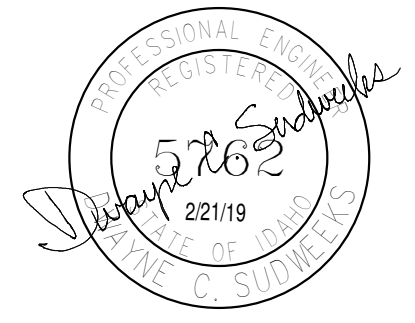
PLAN NOTES:

- CONNECT NEW 2" COLD WATER LINE TO EXISTING 2" COLD WATER OR LARGE ABOVE KITCHEN CEILING. CONTRACTOR TO FIELD VERIFY EXACT SIZE AND LOCATION OF EXISTING COLD WATER PIPING ABOVE KITCHEN CEILING. PROVIDE SHUT-OFF VALVE IN NEW LINE AT POINT OF CONNECTION.
- PROVIDE AND INSTALL NEW ELECTRIC WATER HEATER COMPLETE WITH HEAT TRAP NIPPLES, THERMAL EXPANSION TANK, AND MIXING VALVE. REFER TO DETAIL LP3.1 FOR TYPICAL PIPING CONNECTIONS TO WATER HEATER.
- CONNECT NEW 2" LOW PRESSURE LP GAS LINE TO EXISTING LP GAS LINE ABOVE CEILING OF TOILET ROOM OR KITCHEN COOLERS. RUN NEW 2" PIPING TO EQUIPMENT IN MECHANICAL ROOM AS SHOWN. PROVIDE ISOLATION VALVE IN NEW 2" LINE. LOCATE VALVE IN ACCESSIBLE LOCATION.
- LP GAS FIRED UNIT HEATER TO BE FURNISHED AND INSTALLED BY MECHANICAL CONTRACTOR. PLUMBING CONTRACTOR TO ROUGH-IN AND CONNECT 3/4" LP GAS LINE WITH SHUT-OFF VALVE AND FLEXIBLE HOSE. REFER TO DETAIL HP3.1 FOR TYPICAL GAS LINE CONNECTION.
- DROP 6" ROOF DRAIN DOWN IN CORNER OF MECHANICAL ROOM. EXTEND THRU EXTERIOR WALL AT 18" ABOVE GRADE LEVEL AND CONNECT TO WALL FLANGE. EXTEND OVERFLOW DRAIN THRU WALL AS HIGH AS POSSIBLE.
- 1/2" COLD WATER LINE BELOW FLOOR FROM TRAP PRIMER TO FLOOR DRAIN. REFER TO DETAIL ON THIS SHEET FOR TYPICAL PIPING TO TRAP PRIMER.

KEY PLAN



gpc architects
18 N. Main St., Ste. 200
Driggs, Idaho 83422
208.354.8036
www.gpcarchitects.com



Ownership & Use of Documents
Drawings and specifications, as instruments of professional service are and shall remain the property of the architect. These documents are not to be used in whole or in part for any project or purposes whatsoever, without the prior specific written authorization of GPC Architects PLLC.

Engineered Systems Associates
ESA JOB NUMBER 18003

TETON SCHOOL DISTRICT 401
TETON HIGH SCHOOL ADDITION

gpc

| revisions | | |
|-----------|-------------|------|
| no. | description | date |
| | | |
| | | |
| | | |

project: 18003
date: 02/22/2019
LARGE SCALE PLUMBING PLANS

sheet:
P2.1